

Unidrive M600, M700, M800 Size 6 Retro Mounting Kit Installation Sheet

1 Safety information

Follow the instructions
 The mechanical and electrical installation instructions must be adhered to. Any questions or doubt should be referred to the supplier of the equipment. It is the responsibility of the owner or user to ensure that the installation of the drive and any external option unit, and the way in which they are operated and maintained, comply with the requirements of the Health and Safety at Work Act in the United Kingdom or applicable legislation and regulations and codes of practice in the country in which the equipment is used.

Competence of the installer
 The drive must be installed by qualified personnel who are familiar with the requirements for safety and EMC. The installer is responsible for ensuring that the end product or system complies with all the relevant laws in the country where it is to be used.

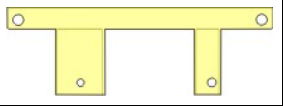



2 Introduction

This document covers Retro mounting instructions for Unidrive M600, M700, M800 size 6 drives.

The Retro Mounting Kit is used for replacing the Unidrive SP size 3 with a Unidrive M size 6 without any modification to the backplate.

The following items are supplied in the kit bag:

Table 2-1 Contents of the bag (CT Part Number: 3470-0074-00)

Description	Image	Qty
Retro fit mounting bracket 1		x 1
M6 x 12 Double sem torx screw		x 2
M6 x 16 Countersunk screw		x 1
Retro mounting kit installation sheet		x 1

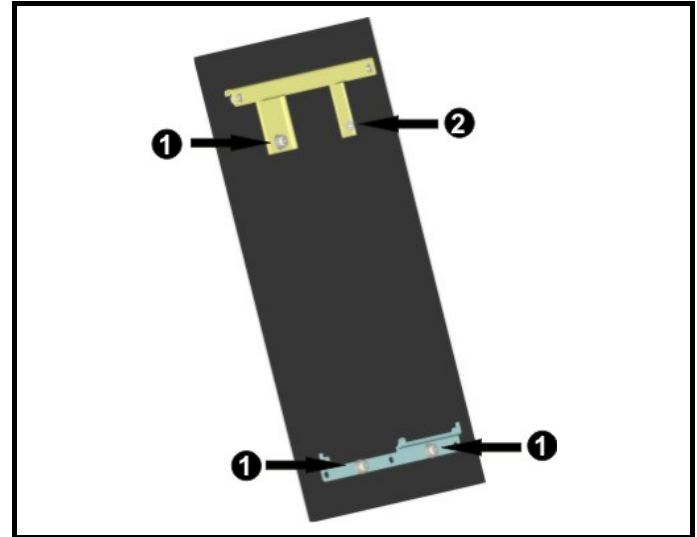
The following items are included in the kit boxes 3470-0054 and 3470-0037, either of which can be supplied with the drive.

Table 2-2 Additional items required

Description	Image	Qty
Frame 6 mounting bracket		x 1

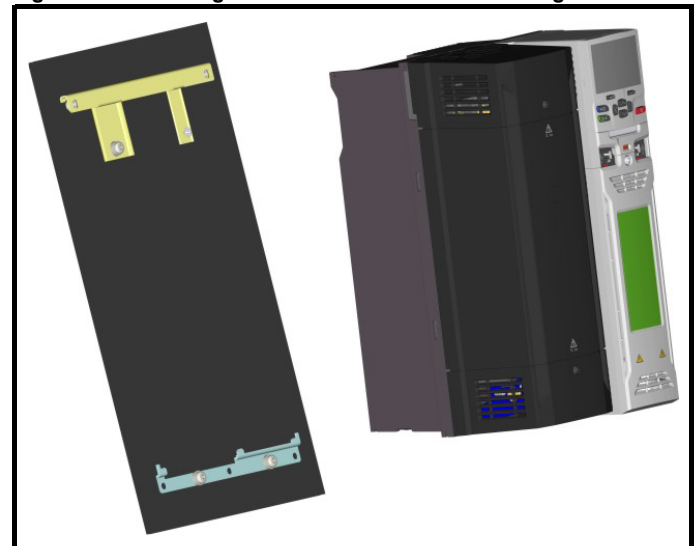
2.1 Installation instructions

Figure 1-1 Installing the brackets



1. Secure the upper Retro fit mounting bracket to the backplate using 1 x M6 suitable fastener (1), and 1 x countersunk screw (2), and tighten to a maximum torque of 3 N m (2.21 lb ft).
2. Position the bottom mounting bracket (supplied with the drive) and loosely fit the bracket using 2 x M6 suitable fasteners (not supplied). Do not fully tighten to the backplate at this stage.

Figure 1-2 Locating the drive to the bottom mounting bracket



Offer the drive up to the lower mounting bracket at a slight approach angle.

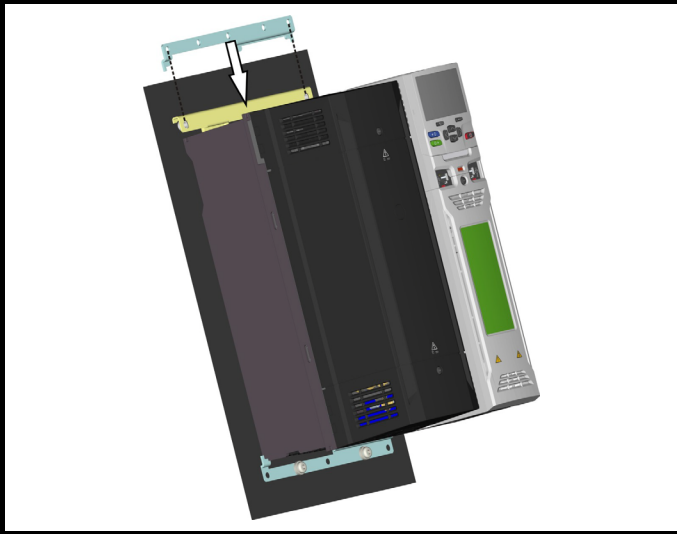


Figure 1-3 Locating the drive to the backplate



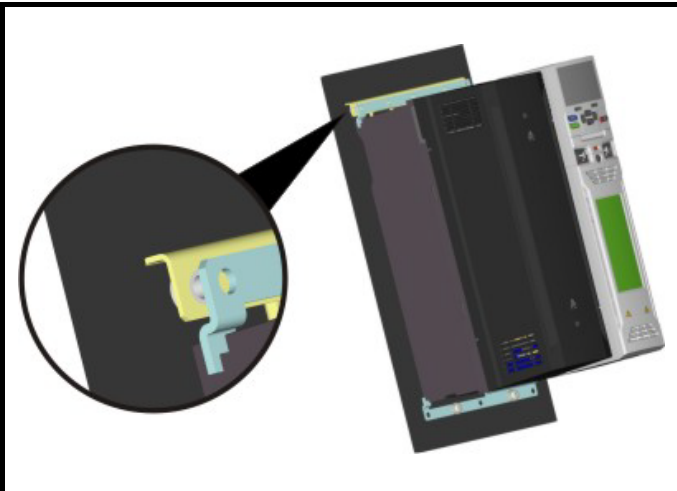
Lower the drive on to the bottom standard mounting bracket so that the drive chassis tabs slot into the bracket. Ensure the drive is supported at all times.

Figure 1-4 Installing the Retro fit mounting bracket 2 - Part 1



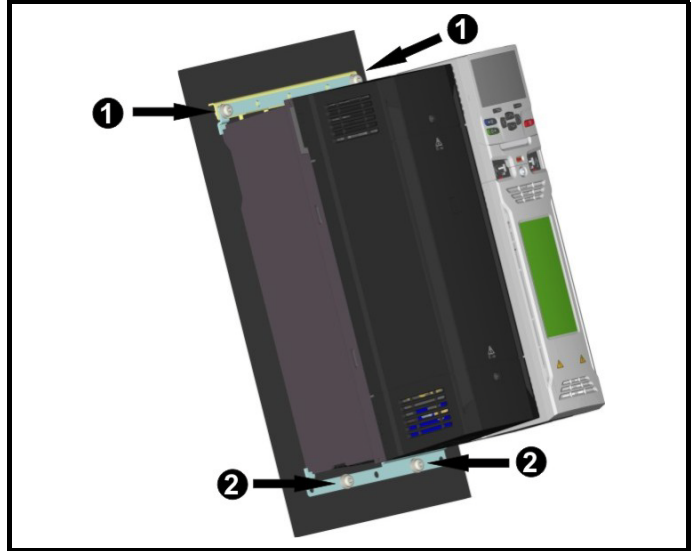
Locate the Retro fit mounting bracket 2 into the drive chassis upper mounting slots.

Figure 1-5 Installing the Retro fit mounting bracket 2 - Part 2



Locate the Retro fit mounting bracket 2 into the drive chassis slots as highlighted above.

Figure 1-6 Securing all brackets



1. Secure the drive to the mounting bracket using the provided M5 fasteners, these should be tightened to a maximum torque of 3 N m (2.21 lb ft).
2. Tighten the M6 screws on the bottom mounting bracket to 3 N m (2.21 lb ft).



0478-0111-01