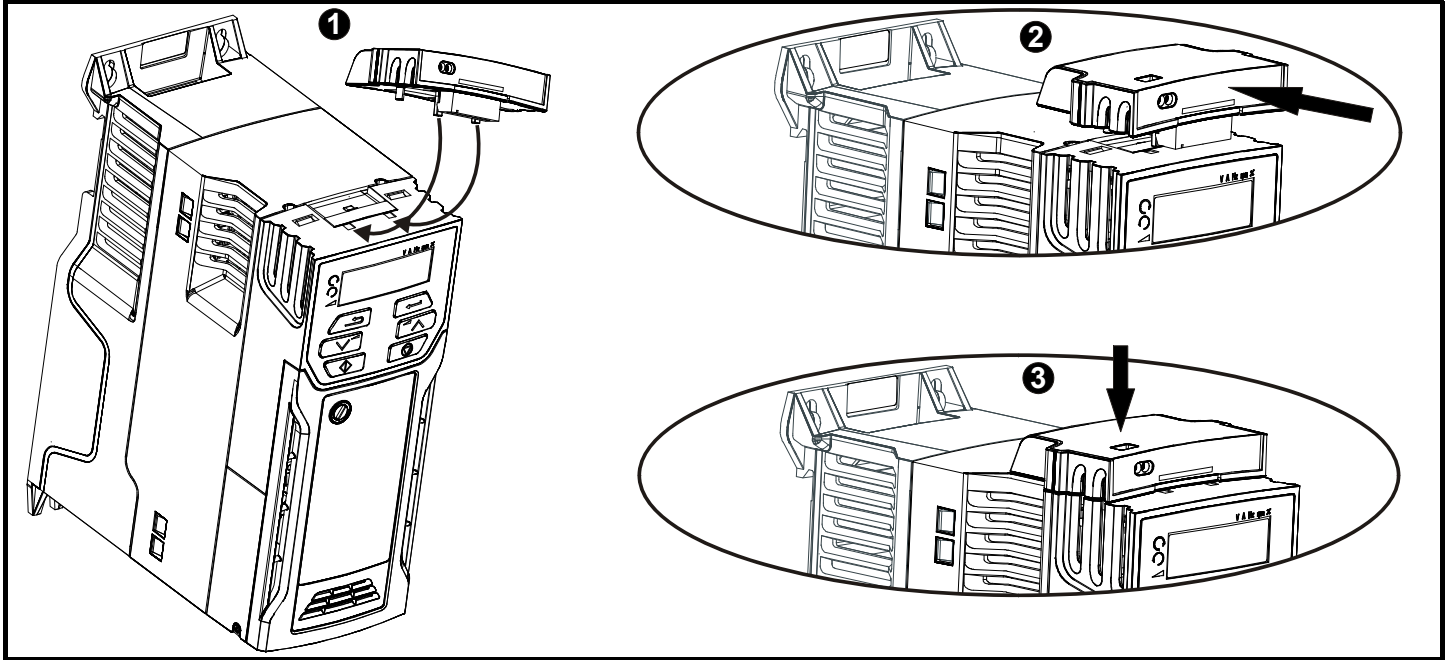


# AI-Backup Adapter Installation Sheet

## 1 Installing the AI-Backup Adapter

The AI-Backup Adapter is a pluggable option installed to the top of a drive as shown in Figure 1-1. It is intended for use with Commander C200, C300, C300 PM and Unidrive M400.

Figure 1-1 Mounting the AI-Backup Adapter to the drive (size 2 shown).



### NOTE

The expected life of the adapter is 600 insertions into the drive.

Module	Terminal information						
<p>AI-Backup Adapter</p>	<table border="1"> <thead> <tr> <th>Terminal</th> <th>Function</th> </tr> </thead> <tbody> <tr> <td>0 V</td> <td>0 V</td> </tr> <tr> <td>+ 24 V</td> <td>+ 24 V Backup supply input</td> </tr> </tbody> </table>	Terminal	Function	0 V	0 V	+ 24 V	+ 24 V Backup supply input
Terminal	Function						
0 V	0 V						
+ 24 V	+ 24 V Backup supply input						

① - Terminal torque 0.23 Nm (2.0 lb in)

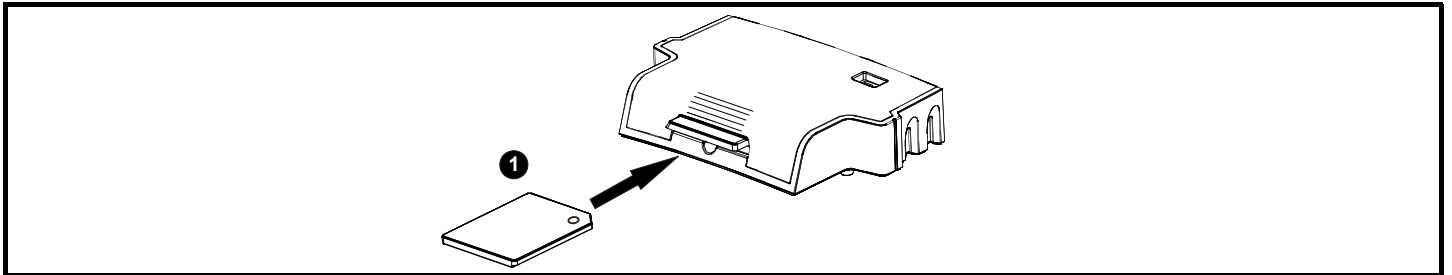
The Non-Volatile Media Card feature enables simple configuration of parameters, parameter back-up and drive cloning using an SD card. The SD card can be used for:

- Parameter copying between drives
- Saving drive parameter sets
- Saving the on-board user program (Unidrive M400 only).

The NV Media Card (SD card) is located in the AI-Backup Adapter.

The drive only communicates with the NV Media Card when commanded to read or write, meaning the card may be "hot swapped".

Figure 1-2 Installation of the SD card



1. Installing the SD card

### NOTE

Before inserting / removing the SD card into / from the AI-Backup Adapter, The AI-Backup Adapter must be removed from the host drive.

### NOTE

A flat bladed screwdriver or similar tool is required in order to insert / remove the SD card fully into / from the AI-Backup Adapter.



0478-0106-03